

Vehicle GPS tracker Coban TK306



Short installation and operating instructions

Full version: <https://nyomkovetes.net>



The device is a satellite tracking device. Due to its compact design and excellent communication capabilities, it is a convenient and efficient device. Its operation, based on the GSM / GPRS network (mobile service providers), the Internet and the GPS satellite system, allows you to retrieve the current position and other data of the device using SMS or an Internet application.

Due to its small size, the device can be easily and quickly placed where you want it. It supports the use of an online map application that also allows real-time map tracking and retrieval of more complex information. It can be operated primarily connected to the vehicle's power supply.

Distributor

FlexCom Communication Kft

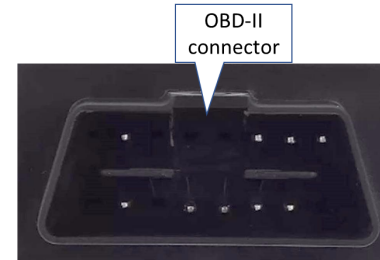
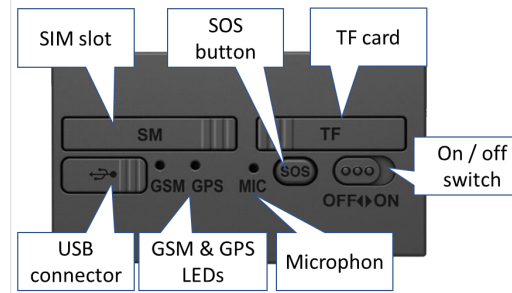
2151 Fót, Szent Imre u. 94. HUNGARY

Phone: +36 1 769 1005

Email: info@nyomkovetes.net

Website: <https://nyomkovetes.net>

1. Parts of the device



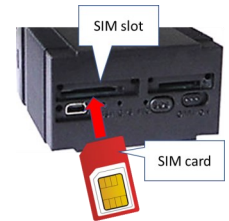
2. Startup

2.1 Preparing the SIM card

If you did not obtain your SIM card from your dealer, you must set it up before inserting / using it in your device:

1. Insert the SIM card into your phone.
2. In the phone settings, turn off the PIN code request option,
3. Turn off the auto answer option, and call forwarding.

After turning off the above, insert the card into the tracking device.



Only standard size SIM cards can be used with this product. If you have another type of SIM, use a card adapter.

2.2 Data traffic setup

If you did not obtain your SIM card from your dealer, you need to connect it to the GSM network. This can be done with the following SMS messages sent to the card's phone number (123456 is the factory default password for the tracking device).

1. Turn on GPRS data traffic
SMS: gprs123456
2. Enter the APN name
SMS: apn123456 (space) APN name
3. Enter the APN username
SMS: apnuser123456 (space) APN username
4. Enter the APN password
SMS: apnpasswd123456 (space) APN password

If your mobile service provider has not provided an APN username and password, messages 3 and 4 do not need to be sent.

2.3 Internal battery

The device has a built-in battery - this allows short (approx. 1 hour) operation without vehicle connection.

In addition to normal use, the device is powered by the vehicle's power source and also charges its internal battery.

If you disconnect the device from the vehicle and want to operate it from your own battery, switch the battery on (or off) using the on / off button.

2.4 Positioning the device

To use the device properly, it must be connected to the vehicle's OBDII connector.



OBD - Onboard Diagnostic System.

2.5 Install the application

If you have subscribed to a software service from your device vendor, for an Android phone:

1. Open the Google Play app on your phone.
2. Search for "FlexCom" or "FlexCom tracking".
3. Install the tracking application.

The software can be run in a browser on your iPhone or computer at the following website:

<https://gpspositions.net/map>

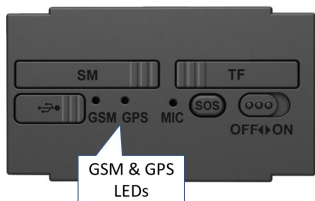


ATTENTION!

You need an active internet connection on your phone or computer to use the software!

3. Using the device

A LED informs the user about the operation and status of the device.



LED	Status	
GSM (green)	Connected to a network in GSM mode	1 flash per 1 second
	Connected to a network in GPRS mode	1 flash every 3 seconds
	Constantly on	No GSM network connection
GPS (blue)	Connected to a satellite network	Flashing
	No satellite connection	Off
Both LEDs flash five times quickly	Successful OBD-II connection.	

3.3 Use the device with SMS messages

If you do not have a software subscription, you can use the basic functions of the device. You can use SMS messages sent from a mobile phone to the phone number of the device's SIM card to set operating parameters or retrieve position data.

In messages, 123456 is the factory-set password for the device.

The general form of the SMS message:

Message code+password [parameters]

where the parameters are optional depending on the nature of the message.



SMS or voice call communication with your device is charged by your mobile service provider at standard phone rates.

3.1 Settings and information

If you are SUBSCRIBED for the software service provided by your reseller, you may set or obtain additional operating parameters and all tracking information through the appropriate features of the software.

If you have NOT SUBSCRIBED for the software service, you can control the device by sending SMS messages to the phone number of the SIM card in it.



ATTENTION!

If you have subscribed to the software service, DO NOT use SMS-based communication!

The extra costs incurred due to direct SMS messages or the costs of resolving any operational problems they may cause will be reimbursed by the service provider.

Example: Querying and displaying a device's location on Google Maps

Call the phone number of the device's SIM card from your phone. After receiving the call, the device interrupts it and then returns the following data in an SMS message:

- latitude and longitude,
- instantaneous speed
- date
- link, which can be clicked / tapped to display your device's indicator on Google Maps in your phone's browser.

One possible answer for the device is:

lat:22.553341 long:113.903418 speed:000.00
T:24/05/11 11:16
<http://maps.google.com/maps?f=q&q=22.553341,113.903418&z=16>

3.2 Use your device through an application

Separate software is available for setting or adjusting the operating parameters of the device, for retrieving information or for using more advanced services (eg map route display, waiting and travel points, diagrams, timetable, etc.). This is provided by the distributor in the form of a downloadable application on a desktop computer, tablet browser, android mobile phone as part of a subscription system.

After launching the application in a browser or phone:

1. In the login window, enter the username and password you received from the reseller or registered on its website.
2. Carefully review the information on using the software in the Help.

Example: Speed limit alarm on or off

You can set the device to send an alarm (SMS) when the vehicle speed exceeds a specified limit. The limit must be entered in the form XXX (eg 120 or 070).

Turning on:

SMS message: speed123456 070

Device response: speed ok

Turning off:

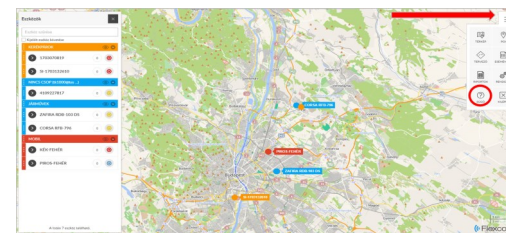
SMS message: nospeed123456

Device response: nospeed ok

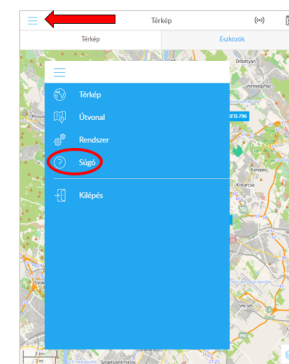
For details on additional SMS commands, see the detailed user guide:

<https://nyomkovetes.net>

For a browser, to access Help:



For mobile application:



Megfelelőségi nyilatkozat

This device complies with the essential requirements and other relevant provisions of the Directives 2014/30 / EU EMC, Electromagnetic Compatibility and 014/35 / EU LVD, designed to be used within certain voltage limits.

The product meets the following specifications and standards:

- EN 55024:2010
- EN 55022:2010 (zavartűrés-jellemzők, határértékek és mérési módszerek)
- EN 61000-3-2:2006 + A1:2009 + A2:2009 (felharmonikus áramok kibocsátási határértékei)
- EN 61000-3-3:2013 (feszültségváltozások, feszültségingadozások és villogás határértékei)