

Teltonika vehicle tracking

FMB003



Short installation and operating instructions

Full version: <https://nyomkovetes.net>



The device is a tracker with a satellite and GSM connection that is able to determine, collect, and transmit the geographic coordinates of the device over a GSM network to a central server. The device has a standard OBD-II interface, which also allows the monitoring of the basic parameters of the vehicle.

Compact and intelligent tracking device with internal High Gain GNSS and GSM antennas and built-in backup battery. In addition to the American GPS satellite system, it is also able to connect to the GLONASS, GALILEO, BEIDOU, SBAS, QZSS, DGPS, AGPS networks for positioning.

Distributor

FlexCom Communication Ltd

2151 Fót, Szent Imre u. 94. HUNGARY

Phone: +36 1 769 1005

Email: info@nyomkovetes.net

Website: <https://nyomkovetes.net>

Manufacturer : TELTONIKA

<https://teltonika-gps.com/product/fmb003>

1. Parts of the device




2. Startup

2.1 Preparing the SIM card

If you did not obtain your SIM card from your dealer, you must set it up before inserting / using it in your device:

1. Insert the SIM card into your phone.
In the phone settings,
2. Turn off the PIN code request option,
3. Turn off the auto answer option, and call forwarding.

After turning off the above, insert the card into the tracking device.

 Only NANO size SIM cards can be used with this product.

2.2 Setting the data traffic

If you did not obtain your SIM card from your dealer, you need to connect it to the GSM network. This can be done with the following SMS messages sent to the card's phone number.

1. Setting the APN name
SMS: setparam 2001: <APN-name>
2. Setting the APN username
SMS: setparam 2002:<APN-username>
3. Setting the APN password
SMS: setparam 2003:<APN-password>

If your mobile service provider has not provided an APN username and password, messages 2 and 3 do not need to be sent. The above instructions can be sent to the device individually or in combination in a single SMS, for example:

```
setparam
2001:internet;2002:pistike;2003:abc123;2004
:provider.hu;2005:15423;2006:0;
```

Application for setup: https://play.google.com/store/apps/details?id=lt.teltonika.teltonika_fmbt

Password: 5555

If you have previously operated your device with software from a tracking application, contact your service provider before switching to a new SIM card, as it may have previously set a password for monitoring SMS traffic on your device and must be deleted first.

2.3 Charging and inserting the SIM card

Charging

During normal operation, the internal battery is charged by the vehicle's power source (battery) or kept charged (with overcharge protection).

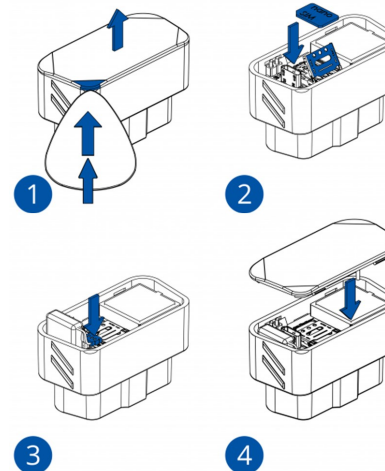
Inserting the SIM card



The card can only be inserted or removed with the device switched off (disconnected from the external power source, excluding the internal battery) - otherwise the card may be damaged.

When replacing cards, remove the battery first after removing the device cover.

Insert the SIM card and battery as follows:



1. Unclip the back of the device.
2. Insert the SIM card.
3. Insert the battery.
4. Snap the cover back on.


2.4 Positioning the device

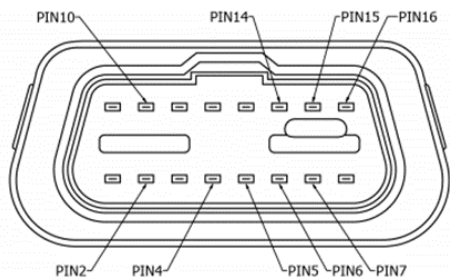
After inserting the SIM card, the device is connected to the standard OBD-II connector of the vehicle.

By extending the connection cable (professionally), the device can be placed anywhere inside the vehicle (protected from environmental influences), usually in the passenger compartment of the vehicle (eg under the instrument panel).

Compatible OBD protocols:

1. SAE J1850 PWM (41.6 kbaud)
2. SAE J1850 VPW (10.4 kbaud)
3. ISO 9141-2 (5 baud init, 10.4 kbaud)
4. ISO 14230-4 KWP (5 baud init, 10.4 kbaud)
5. ISO 14230-4 KWP (fast init, 10.4 kbaud)
6. ISO 15765-4 CAN (11 bit ID, 250 kbaud)
7. ISO 15765-4 CAN (11 bit ID, 500 kbaud)

 When connected to a power source (external or internal battery) and when the SIM card is inserted, the device switches on automatically.



PIN 2	PWM_BUS+/VPW	
PIN 4	GND (-)	Föld
PIN 5	GND (-)	Föld
PIN 6	CAN_H	CAN high
PIN 7	K-Line	
PIN 10	PWM_BUS-	
PIN 14	CAN_L	CAN low
PIN 15	L-Line	
PIN 16	VCC (10-30)V DC (+)	Power source

3. Using the device

LED indicators inform the user about the operation and status of the device.



Status LED

Signal	Meaning
Flashes every 1 second	Normal mode
Flashes every 2 second	Sleep mode
Flashes for short time	Data traffic
Not lit	The device does not work or is being switched on

Navigation LED

Constantly lit.	No satellite connection
Flashes every 1 second	Satellite connection on
Not lit	No satellite connection (device does not work or is in sleep mode)
Constantly flashes	The device's firmware is being updated

3.1 Settings and information

If you are SUBSCRIBED for the software service provided by your reseller, you may set or obtain additional operating parameters and all tracking information through the appropriate features of the software.

If you have NOT SUBSCRIBED for the software service, you can control the device by sending SMS messages to the phone number of the SIM card in it.



If you have subscribed to the software service, DO NOT use SMS-based communication!

The extra costs incurred due to direct SMS messages or the costs of resolving any operational problems they may cause will be reimbursed by the service provider.

More information:

<https://wiki.teltonika-gps.com/view/FMB003>

3.2 Install an application

If you have subscribed to a software service from your device vendor, for an Android phone:

1. Open the Google Play app on your phone.
2. Search for "FlexCom" or "FlexCom tracking".
3. Install the tracking application.

The software can be run in a browser on your iPhone or computer at the following website:

<https://gpspositions.net/map>



ATTENTION!

You need an active internet connection on your phone or computer to use the software!

3.3 Using your device through an application

Separate software is available for setting or adjusting the operating parameters of the device, for retrieving information or for using more advanced services (eg map route display, waiting and travel points, diagrams, timetable, etc.). This is provided by the distributor in the form of a downloadable application on a desktop computer, tablet browser, android mobile phone as part of a subscription system.

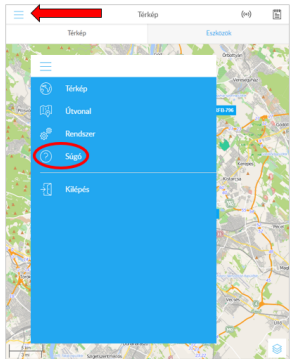
After launching the application in a browser or phone:

1. In the login window, enter the username and password you received from the reseller or registered on its website.
2. Carefully review the information on using the software in the Help.

For a browser, access Help:



For mobile application:



If you do not use (did not subscribe to) the software service provided by the dealer, you can find the settings and functions of the device via SMS messages sent to the phone number of the device's SIM card or computer (Windows 7, 8, 10) using the Teltonika Configurator software. query or modify.

More information can be found on the manufacturer's websites:

<https://wiki.teltonika-gps.com/view/FMB003>

[https://wiki.teltonika-gps.com/view/Teltonika Configurator](https://wiki.teltonika-gps.com/view/Teltonika_Configurator)

Certifications

This device complies with the essential requirements and other relevant provisions of the Directives 2014/30 / EU EMC, Electromagnetic Compatibility and 2014/35 / EU LVD, designed for use within certain voltage limits, and complies with European Union radio frequency exposure limits.

Health and safety

EN 50665:2017, EN 62311:2020, EN 62368-1:2020+A11:2020

Electromagnetic compatibility

EN 55032:2015+A11:2020, EN 55035:2017+A11:2020
ETSI EN 301 489-1 V2.2.3, ETSI EN 301 489-17 V3.2.4
ETSI EN 301 489-19 V2.1.1, Draft ETSI EN 301 489-52 V1.1.0

Interference tolerance characteristics, limits

EN 301 511 V12.5.1, EN 300 328 V2.2.2, EN 303 413 V1.1.1

RoHS, EAC, REACH

További információk: https://wiki.teltonika-gps.com/ew/FMB002_Certification_%26_Approvals