

Teltonika vehicle tracking FMB140



Short installation and operating instructions

Full version: <https://nyomkovetes.net>



The Teltonika FMB140 is a compact and intelligent tracking device with Bluetooth connectivity, internal High Gain GNSS and GSM antennas and a built-in spare battery. The FMB920 is primarily designed to track smaller vehicles in areas such as insurance telematics, recovery of rental cars, stolen cars, public security services, transport, taxis, etc. In addition to the American GPS satellite system, it is also able to connect to the GLONASS, GALILEO, BEIDOU, SBAS, QZSS, DGPS, AGPS networks for positioning. With the help of real-time tracking and retrospective route query, the user can check the current and past positions and movements of the tracked vehicle at any time.

Distributor

FlexCom Communication Ltd

2151 Fót, Szent Imre u. 94. HUNGARY

Phone: +36 1 769 1005

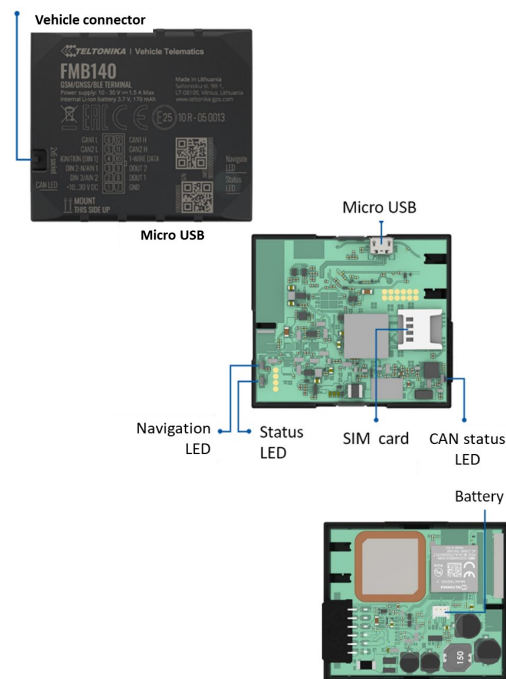
Email: info@nyomkovetes.net

Website: <https://nyomkovetes.net>

Manufacturer : TELTONIKA

<https://teltonika-gps.com/product/fmb140/>

1. Parts of the device



2. Startup

2.1 Preparing the SIM card

If you did not obtain your SIM card from your dealer, you must set it up before inserting / using it in your device:

1. Insert the SIM card into your phone.
In the phone settings,
2. Turn off the PIN code request option,
3. Turn off the auto answer option, and call forwarding.

After turning off the above, insert the card into the tracking device.



Only micro-sized SIM cards can be used with this product. If you have another type of SIM, use a card adapter.

2.2 Setting the data traffic

If you did not obtain your SIM card from your dealer, you need to connect it to the GSM network. This can be done with the following SMS messages sent to the card's phone number.

1. Setting the APN name
SMS: setparam 2001: <APN-name>
2. Setting the APN username
SMS: setparam 2002: <APN-username>
3. Setting the APN password
SMS: setparam 2003: <APN-password>

If your mobile service provider has not provided an APN username and password, messages 2 and 3 do not need to be sent. The above instructions can be sent to the device individually or in combination in a single SMS, for example:

```
setparam
2001:internet;2002:abcdef;2003:abc123;2004:
provider.hu;2005:15423;2006:0;
```

Application for setup: https://play.google.com/store/apps/details?id=lt.teltonika.teltonika_fmbt

Password: 5555

2.3 Charging and inserting the SIM card

Charging

During normal operation, the internal battery is charged by the vehicle's power source (battery) or kept charged (with overcharge protection).

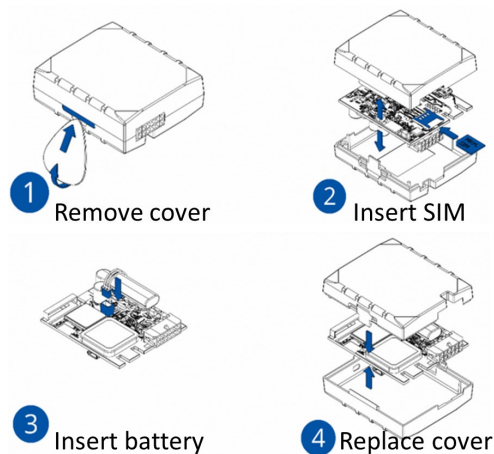
Inserting the SIM card



The card can only be inserted or removed with the device switched off (disconnected from the external power source, excluding the internal battery) - otherwise the card may be damaged.

When replacing cards, remove the battery first after removing the device cover.

Insert the SIM card and battery as follows:



When connected to a power source (external or internal battery), the device turns on automatically.

2.4 Positioning the device

By extending the connection cable (professionally), the device can be placed anywhere inside the vehicle (protected from environmental influences), usually in the passenger compartment of the vehicle (eg under the instrument panel).

3. Using the device

LED indicators inform the user about the operation and status of the device.

Status LED	
Signal	Meaning
Flashes every 1 second	Normal mode
Flashes every 2 seconds	Sleep mode
Flashes quickly for a short time	Data traffic
Not lit	The device does not work or is being switched on

Navigation LED	
Signal	Meaning
Constantly lit	No satellite connection
Flashes every 1 second	Satellite connection on
Not lit	No satellite connection because the device is not working or in sleep mode
Keeps flashing fast	The device's firmware is being updated

CAN status LED	
Signal	Meaning
Constantly lit	Malfunction (program or wire error)
Keeps flashing fast	Reading vehicle data
Not lit	Connection error or CAN processor is in sleep mode

3.1 Settings and information

If you are SUBSCRIBED for the software service provided by your reseller, you may set or obtain additional operating parameters and all tracking information through the appropriate features of the software.

If you have NOT SUBSCRIBED for the software service, you can control the device by sending SMS messages to the phone number of the SIM card in it.



If you have subscribed to the software service, DO NOT use SMS-based communication!

The extra costs incurred due to direct SMS messages or the costs of resolving any operational problems they may cause will be reimbursed by the service provider.

More information:

<https://wiki.teltonika-gps.com/view/FMB140>

3.2 Location, installation

By extending the connection cable (professionally), the device can be placed anywhere inside the vehicle (protected from environmental influences), usually in the passenger compartment of the vehicle (eg under the instrument panel).



Only have the appliance installed by a specialist. Improper installation may result in malfunction or damage to the unit.

More information:

<https://wiki.teltonika-gps.com/view/FMB140>

The connection cable layout is shown in the figure below:



PIN NUMBER	PIN NAME	DESCRIPTION
1	VCC (10-30)V DC (+)	Power supply (+10-30 V DC)
2	DIN3 / AIN2	Digital input, channel 3 / Analog input, channel 2. Input range: 0-30 V DC
3	DIN2-N / AIN1	Digital input, channel 3 with ground sense / Analog input, channel 1. Input range: 0-30 V DC.
4	DIN 1	Digital input, channel 1
5	CAN2L	CAN2 Low
6	CAN1L	CAN1 Low
7	GND	Ground
8	DOUT 1	Digital output, channel 1. Open collector output. Max. 3,3 A DC.
9	DOUT 2	Digital output, channel 2. Open collector output. Max. 3,3 A DC.
10	1WIRE DATA	Data for 1-Wire devices.
11	CAN2H	CAN2 High
12	CAN1H	CAN1 High

3.2 Install an application

If you have subscribed to a software service from your device vendor, for an Android phone:

1. Open the Google Play app on your phone.
2. Search for "FlexCom" or "FlexCom tracking".
3. Install the tracking application.

The software can be run in a browser on your iPhone or computer at the following website:

A szoftver iPhone-on vagy számítógépen böngészőben működtethető, az alábbi weboldalon:

<https://gpspositions.net/map>



ATTENTION!

You need an active internet connection on your phone or computer to use the software!

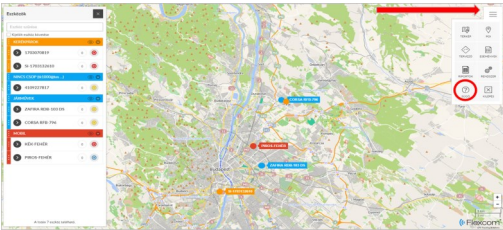
3.4 Using your device through an application

Separate software is available for setting or adjusting the operating parameters of the device, for retrieving information or for using more advanced services (eg map route display, waiting and travel points, diagrams, timetable, etc.). This is provided by the distributor in the form of a downloadable application on a desktop computer, tablet browser, android mobile phone as part of a subscription system.

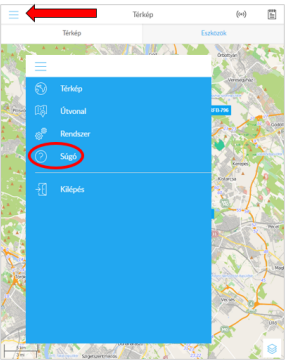
After launching the application in a browser or phone:

1. In the login window, enter the username and password you received from the reseller or registered on its website.
2. Carefully review the information on using the software in the Help.

For a browser, access Help:



For mobile application:



Certifications

This device complies with the essential requirements and other relevant provisions of the Directives 2014/30 / EU EMC, Electromagnetic Compatibility and 2014/35 / EU LVD, designed for use within certain voltage limits, and complies with European Union radio frequency exposure limits.

Health and safety

EN 50665:2017, EN 62311:2020, EN 62368-1:2020+A11:2020

Electromagnetic compatibility

EN 55032:2015+A11:2020, EN 55035:2017+A11:2020
ETSI EN 301 489-1 V2.2.3, ETSI EN 301 489-17 V3.2.4
ETSI EN 301 489-19 V2.1.1, Draft ETSI EN 301 489-52 V1.1.0

Interference tolerance characteristics, limits

EN 301 511 V12.5.1, EN 300 328 V2.2.2, EN 303 413 V1.1.1

RoHS, EAC, REACH

More information: [https://wiki.teltonika-gps.com/ew/FMB002 Certification %26 Approvals](https://wiki.teltonika-gps.com/ew/FMB002%20Certification%26Approvals)