

# Teltonika car tracker FMB920



## Short installation and operating instructions

Full version: <https://nyomkovetes.net>



The Teltonika FMB920 is a compact and intelligent tracking device with Bluetooth connectivity, internal High Gain GNSS and GSM antennas and a built-in spare battery. The FMB920 is primarily designed to track smaller vehicles in areas such as insurance telematics, recovery of rental cars, stolen cars, public security services, transport, taxis, etc. In addition to the American GPS satellite system, it is also able to connect to the GLONASS, GALILEO, BEIDOU, SBAS, QZSS, DGPS, AGPS networks for positioning. With the help of real-time tracking and retrospective route query, the user can check the current and past positions and movements of the tracked vehicle at any time.

### Distributor

#### Flexcom Communication Ltd

2151 Fót, Szent Imre u. 94. HUNGARY

Phone: +36 1 769 1005

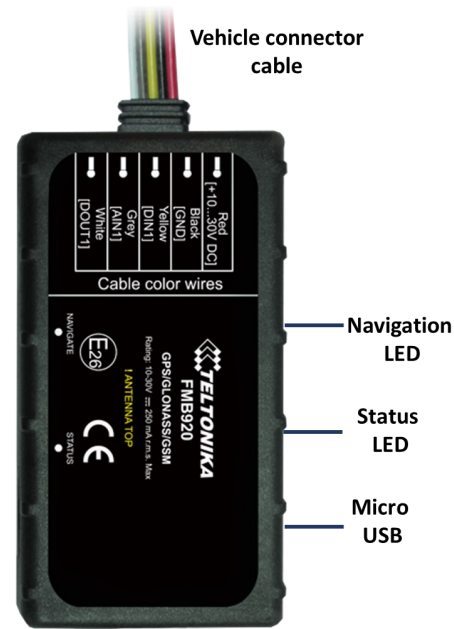
Email: [info@nyomkovetes.net](mailto:info@nyomkovetes.net)

Website: <https://nyomkovetes.net>

Manufacturer : TELTONIKA

<https://teltonika-gps.com/product/fmb920/>

## 1. Parts of the device




## 2. Startup

### 2.1 Preparing the SIM card

If you did not obtain your SIM card from your dealer, you must set it up before inserting / using it in your device:

1. Insert the SIM card into your phone. In the phone settings,
2. Turn off the PIN code request option,
3. Turn off the auto answer option, and call forwarding.

After turning off the above, insert the card into the tracking device.

 Only micro-sized SIM cards can be used with this product. If you have another type of SIM, use a card adapter.

### 2.2 Setting the data traffic

If you did not obtain your SIM card from your dealer, you need to connect it to the GSM network. This can be done with the following SMS messages sent to the card's phone number.

1. Setting the APN name  
SMS: setparam 2001: <APN-name>
2. Setting the APN username  
SMS: setparam 2002:<APN-username>
3. Setting the APN password  
SMS: setparam 2003:<APN-password>

If your mobile service provider has not provided an APN username and password, messages 2 and 3 do not need to be sent. The above instructions can be sent to the device individually or in combination in a single SMS, for example:

```
setparam
2001:internet;2002:abcdef;2003:abc123;2004:
provider.hu;2005:15423;2006:0;
```

Application for setup: [https://play.google.com/store/apps/details?id=lt.teltonika.teltonika\\_fmbt](https://play.google.com/store/apps/details?id=lt.teltonika.teltonika_fmbt)

Password: 5555

### 2.3 Charging and inserting the SIM card

#### Charging

During normal operation, the internal battery is charged by the vehicle's power source (battery) or kept charged (with overcharge protection).

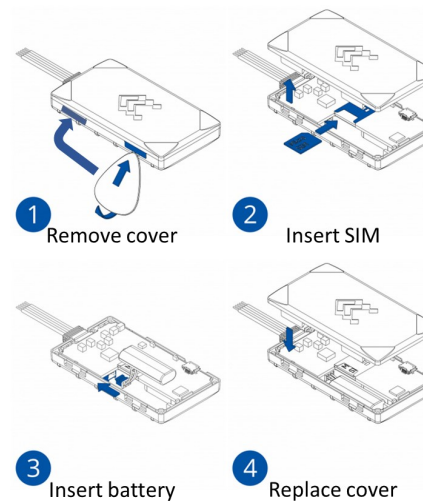
#### Inserting the SIM card



The card can only be inserted or removed with the device switched off (disconnected from the external power source, excluding the internal battery) - otherwise the card may be damaged.

**When replacing cards, remove the battery first after removing the device cover.**

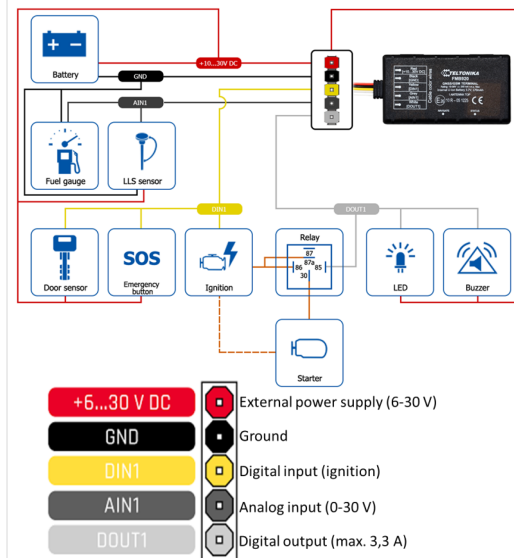
Insert the SIM card and battery as follows:



When connected to a power source (external or internal battery), the device turns on automatically.

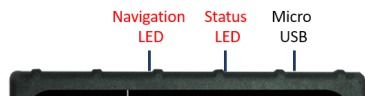
### 2.4 Positioning the device

By extending the connection cable (professionally), the device can be placed anywhere inside the vehicle (protected from environmental influences), usually in the passenger compartment of the vehicle (eg under



### 3. Using the device

LED inform the user about the operation and status of the device.



Status LED

Signal	Meaning
Flashes every 1 second	Normal mode
Flashes every 2 second	Sleep mode
Flashes quickly for a short	Data traffic
Not lit	Not working or is being switched on

Navigációs LED

Constantly lit	No satellite connection
Flashes every 1 second	Satellite connection on
Not lit	No satellite connection (device does not work or is in sleep mode)
Keeps flashing fast	The device's firmware is being updated

### 3.1 Settings and information

If you are SUBSCRIBED for the software service provided by your reseller, you may set or obtain additional operating parameters and all tracking information through the appropriate features of the software.

If you have NOT SUBSCRIBED for the software service, you can control the device by sending SMS messages to the phone number of the SIM card in it.



If you have subscribed to the software service, DO NOT use SMS-based communication!

The extra costs incurred due to direct SMS messages or the costs of resolving any operational problems they may cause will be reimbursed by the service provider.

More information:

<https://wiki.teltonika-gps.com/view/FMB140>

### 3.2 Factory default settings

The device comes with the following factory default settings:

Motion detection

Function	Event
The device registers an On Moving event and sends it to the server center if any of the listed events occur.	if the vehicle is driven for at least 300 seconds, or  if the vehicle has traveled at least 100 m, or  if the vehicle has made a turn of at least 10 degrees, or  if the difference between the speed measured at the last and current positions exceeds 10 km / h.

Shutdown detection

Function	Event
The device registers an On Stop event and sends it to the server center if any of the listed events occur.	if the vehicle is stationary for at least 1 hour and the ignition is switched off.

Alerts related to the above settings are sent to the server every 120 seconds until a change in vehicle status occurs.

### 3.2 Install an application

If you have subscribed to a software service from your device vendor, for an Android phone:

1. Open the Google Play app on your phone.
2. Search for "FlexCom" or "FlexCom tracking".
3. Install the tracking application.

The software can be run in a browser on your iPhone or computer at the following website:

A szoftver iPhone-on vagy számítógépen böngészőben működtethető, az alábbi weboldalon:

<https://gpspositions.net/map>



ATTENTION!

You need an active internet connection on your phone or computer to use the software!

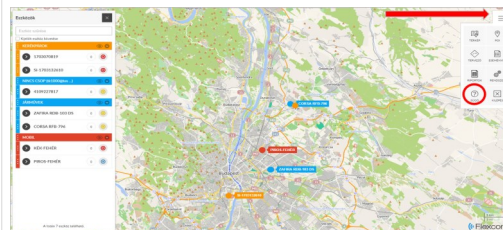
### 3.4 Using your device through an application

Separate software is available for setting or adjusting the operating parameters of the device, for retrieving information or for using more advanced services (eg map route display, waiting and travel points, diagrams, timetable, etc.). This is provided by the distributor in the form of a downloadable application on a desktop computer, tablet browser, android mobile phone as part of a subscription system.

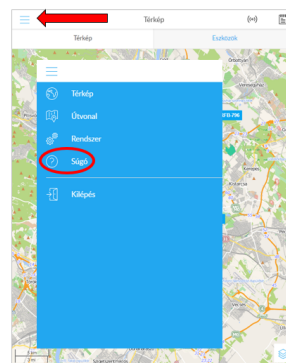
After launching the application in a browser or phone:

1. In the login window, enter the username and password you received from the reseller or registered on its website.
2. Carefully review the information on using the software in the Help.

For a browser, access Help:



For mobile application:



### Certifications

This device complies with the essential requirements and other relevant provisions of the Directives 2014/30 / EU EMC, Electromagnetic Compatibility and 2014/35 / EU LVD, designed for use within certain voltage limits, and complies with European Union radio frequency exposure limits.

Health and safety

EN 50665:2017, EN 62311:2020, EN 62368-1:2020+A11:2020

Electromagnetic compatibility

EN 55032:2015+A11:2020, EN 55035:2017+A11:2020  
 ETSI EN 301 489-1 V2.2.3, ETSI EN 301 489-17 V3.2.4  
 ETSI EN 301 489-19 V2.1.1, Draft ETSI EN 301 489-52 V1.1.0

Interference tolerance characteristics, limits

EN 301 511 V12.5.1, EN 300 328 V2.2.2, EN 303 413 V1.1.1

RoHS, EAC, REACH

More information: [https://wiki.teltonika-gps.com/ew/FMB002\\_Certification\\_%26\\_Approvals](https://wiki.teltonika-gps.com/ew/FMB002_Certification_%26_Approvals)